



MOUNT VERNON

VESSELS & VINES

PRODUCT CATALOG

2026



*Premium wholesale planter solutions
tailored to local landscape design experts so you can
bring creative inspirations to life.*



TABLE OF CONTENTS

About	Page 3	Cedar Planters	Page 11-12
Metal Planters	Page 4-8	Heritage Collection	Page 13-16
Screens & Trellis	Page 7	Contemporary Fiberglass Collection	Page 17-18
Composite Cladded	Page 9-10	How to Order/Quote	Page 19

ABOUT US

At Mount Vernon Vessels & Vines (MVVV), we offer exceptional customer service, saving you time procuring materials with honest and open discussion on pricing, lead times, and value engineering options. Our offerings include low carbon footprint material options and multiple high-quality materials, and we support your project needs from start to finish.

Mount Vernon Vessels & Vines is a wholesale distributor focused on sourcing, stocking and providing expert advice for all your container gardening needs, from material selection to soil requirements, drainage or retention, trellises and more. **We are your single source solution for planters and accessories.**

Let us make you the contractor or designer of choice for your clients by handling your container gardening needs with high quality products, horticultural expertise and landscape design know-how. We source, design, manage and deliver so you don't have to!



MOUNT VERNON
VESSELS & VINES



METAL PLANTERS

Elevate your space with MVVV's expertly designed metal landscape planters that seamlessly blend modern design with practicality. Crafted from high-quality, powder-coated steel, these planters are built to withstand the elements while adding a sleek touch to your garden, rooftop, patio, or balcony.

- **Durable Construction:** Made from 11-gauge carbon steel, zinc-rich primer and powdered-coated finish makes these planters are resistant to corrosion and fading.
- **Built-In Drainage:** Standard drainage holes and an optional drip tray or drain plug ensure optimal plant health by managing excess water, preventing overwatering and promoting root health.
- **Superior Strength:** Our planter box features 11-gauge carbon steel with a zinc-rich primer and powder coated finish. Constructed for unparalleled durability and stability.
- **Stylish Design:** With clean lines and a contemporary finish, our planters seamlessly blend with any landscape style, from minimalist to rustic.
- **Versatile Sizes:** Available in a range of sizes and with custom sizing available, these planters can accommodate everything from vibrant flower displays to lush greenery and trees.
- **Made in the USA:** Proudly crafted by a team of expert fabricators and powder-coaters, each planter box embodies quality and craftsmanship. Includes a 5-year warranty.

Whether you're looking to showcase colorful blooms or create a serene oasis, our Metal Landscape Planters are the perfect solution for enhancing your outdoor aesthetic. Transform your space today.





CUBE

SIZE	L X W X H	WEIGHT
Planter (S)	18" x 18" x 18"	65 lbs
Drip Tray	18" x 18" x 2"	14 lbs
Planter (M)	24" x 24" x 24"	112 lbs
Drip Tray	24" x 24" x 2"	24 lbs
Planter (L)	36" x 36" x 36"	243 lbs
Drip Tray	36" x 36" x 2"	51 lbs

TALL CUBE

SIZE	L X W X H	WEIGHT
Planter (S)	18" x 18" x 30"	94 lbs
Drip Tray	18" x 18" x 2"	14 lbs
Planter (M)	24" x 24" x 36"	151 lbs
Drip Tray	24" x 24" x 2"	24 lbs
Planter (L)	36" x 36" x 42"	273 lbs
Drip Tray	36" x 36" x 2"	51 lbs



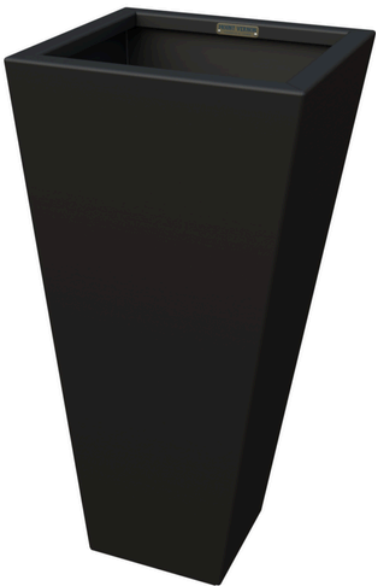
CYLINDER

SIZE	D X H	WEIGHT
Planter (S)	18"d x 14"h	41 lbs
Drip Tray	18"d x 2"h	12 lbs
Planter (M)	24"d x 17"h	62 lbs
Drip Tray	24"d x 2"h	20 lbs
Planter (L)	36"d x 28"h	146 lbs
Drip Tray	36"d x 2"h	41 lbs

Inquire About
Custom Sizing

TAPERED

SIZE	L X W X H	WEIGHT
Planter (S)	16" x 16" x 30"	56 lbs
Planter (M)	18" x 18" x 36"	79 lbs
Planter (L)	20" x 20" x 42"	102 lbs



RECTANGLE



SIZE	L X W X H	WEIGHT
Planter (S)	24" x 18" x 36"	129 lbs
Drip Tray	24" x 18" x 2"	19 lbs
Planter (M)	36" x 18" x 36"	170 lbs
Drip Tray	36" x 18" x 2"	27 lbs
Planter (L)	48" x 18" x 36"	212 lbs
Drip Tray	48" x 18" x 2"	35 lbs
Planter (XL)	36" x 24" x 24"	145 lbs
Drip Tray	36" x 24" x 2"	35 lbs
Planter (XXL)	48" x 24" x 24"	178 lbs
Drip Tray	48" x 24" x 22"	46 lbs

INQUIRE ABOUT CUSTOM SIZING

TRELLISES

L X H	WEIGHT
-------	--------

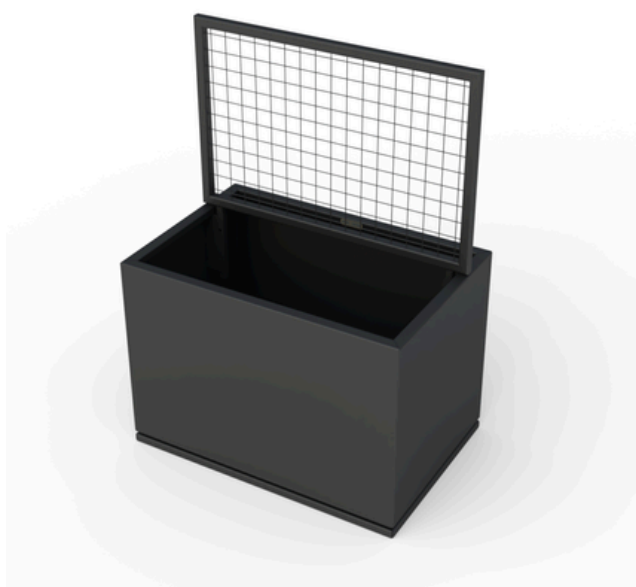
36" x 24"	25 lbs
-----------	--------

36" x 36"	27 lbs
-----------	--------

48" x 24"	25 lbs
-----------	--------

48" x 36"	30 lbs
-----------	--------

**TRELLISES ARE DESIGNED FOR
RECTANGLE PLANTERS**



SCREENS

L X H	WEIGHT
-------	--------

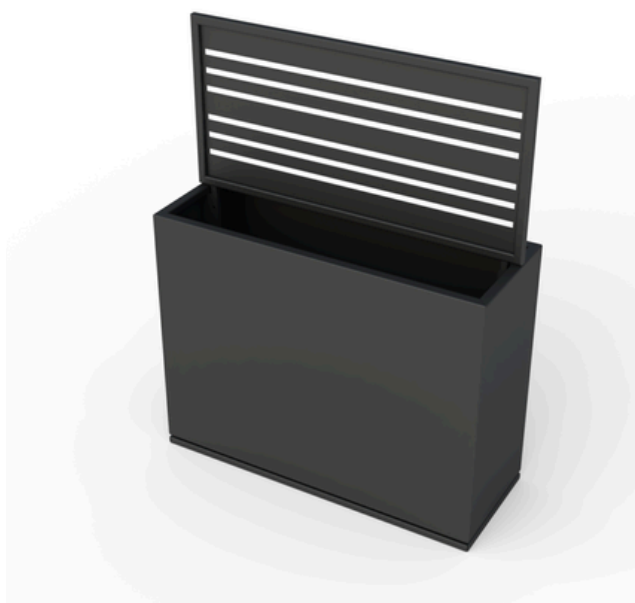
36" x 24"	38 lbs
-----------	--------

36" x 36"	42 lbs
-----------	--------

48" x 24"	48 lbs
-----------	--------

48" x 36"	52 lbs
-----------	--------

**SCREENS ARE DESIGNED FOR
RECTANGLE PLANTERS**

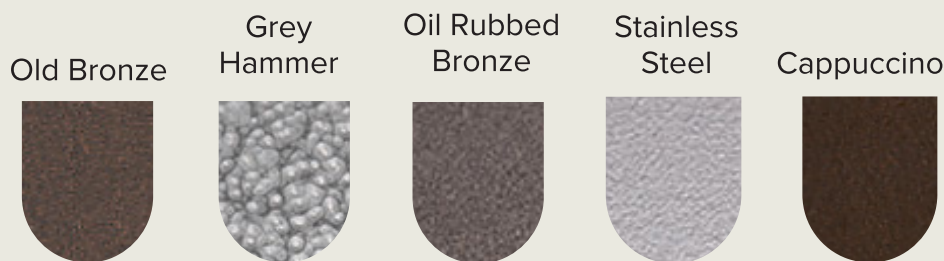


METAL FINISHES

STANDARD:



PREMIUM:



MAINTENANCE & CARE

Our steel planters are designed for exterior locations, however they can be placed indoors with proper protection under the planters. Place planters on a solid level surface so that air circulation below the planter reduces moisture. Use proper drainage techniques so that water does not stand in the bottom of the planter which can cause rusting or deterioration. Clean surfaces with water or a mild detergent using a soft cloth or sponge. Avoid using aggressive chemicals or mechanical cleaning agents, such as bleach, high-pressure cleaners or hard brushes, which might affect or damage the finish. Planters in the natural patina should be sealed once desired rust and darkening occurs. Sealing the planters can be with Renaissance Wax, Everbrite, Penetrol or Permacoat Xtreme. The protective patina layer will form a barrier to reduce rusting if left without sealing. Without drying cycles, corrosion may continue and cause early failure. Rust may leach onto the ground surface with the potential to stain. Place planters in locations where this will not be a problem.

CALL WITH QUESTIONS

COMPOSITE CLADDDED PLANTERS

NEW IN 2026!



Introducing Our New Composite-Cladded Metal Planter: Strength Meets Warmth

Meet the next evolution in modern outdoor design. Our newest planter seamlessly blends the uncompromising durability of our metal planters with the inviting warmth of natural wood without any of the maintenance that traditional wood demands.

Built with our robust powder-coated metal interior for long-term structural integrity, this planter is wrapped in premium composite cladding that replicates the rich look and texture of real wood. The result? A refined, contemporary aesthetic that stands up to every season. No sanding. No staining. No fading. Just reliable performance and timeless style. Whether used in commercial landscapes, residential patios, or rooftop terraces, this planter delivers:

- **All-weather durability** from a fully-welded metal body
- **Horizontal composite panels** that mirror the beauty of wood
- **Zero-maintenance longevity** — no warping, cracking or rot
- **A clean architectural profile** that elevates any outdoor environment

This is durable design reimaged: modern, warm, and built to last. The perfect solution for clients who want the best of both worlds: the beauty of wood and the strength of metal, with none of the upkeep.



CUBE

SIZE	L X W X H
Planter (S)	18" x 18" x 18"
Planter (M)	24" x 24" x 24"
Planter (L)	36" x 36" x 36"

TALL CUBE

SIZE	L X W X H
Planter (S)	18" x 18" x 30"
Planter (M)	24" x 24" x 36"
Planter (L)	36" x 36" x 42"



RECTANGLE

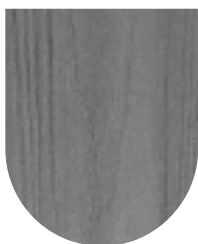
SIZE	L X W X H
Planter (S)	24" x 18" x 36"
Planter (M)	36" x 18" x 36"
Planter (L)	48" x 18" x 36"
Planter (XL)	36" x 24" x 24"
Planter (XXL)	48" x 24" x 24"

CLADDING FINISHES

Light Brown



Gray



Dark Brown



INQUIRE ABOUT CUSTOM
SIZING

CEDAR PLANTERS

Transform your patio, deck, rooftop, or courtyard into a lush vegetable garden with our premium cedar planter box. Designed with both style and functionality in mind, this planter box offers an array of features to enhance your gardening endeavors:

- **Food Safe & Chemical-Free:** Grow your own healthy, fresh vegetables with confidence, knowing our planter box is free from harmful chemicals.
- **Eco-Friendly Construction:** Crafted from rot-resistant western red cedar, this planter box is as kind to the environment as it is to your plants.
- **Built-In Drainage:** A slatted cedar base ensures excellent water drainage, preventing overwatering and promoting root health.
- **Superior Strength:** Our planter box features powder-coated steel corner construction for unparalleled durability and stability.
- **Filter Fabric Included:** A free filter fabric liner helps retain soil and prevents erosion.
- **Natural Pest Repellent:** Cedar's inherent oils act as a deterrent against pests such as termites, moths, and ants, keeping your plants safe and thriving.
- **Made in the USA:** Proudly crafted by an artisan furniture maker, each planter box embodies quality and craftsmanship. Includes a 5-year warranty.

Elevate your gardening game and enjoy the benefits of a beautifully crafted, functional planter box that enhances any outdoor space. Ideal for anyone looking to grow their own fresh vegetables or who's interested in planting in sustainable planters.

MAINTENANCE & CARE

Our planter boxes are made with the highest quality Western Red Cedar, known for its strength, durability and resistance to decay, moisture and insects. Over time the cedar can fade from the light orangey-brown shade to more of a light gray shade. Clean cedar with a mild soap or a biodegradable wood cleaner when desired. You can seal cedar by applying a high-quality, non-toxic wood sealant such as a UV protection oil. A multi-purpose oil protects against water and dirt as well as protecting against wood swelling and shrinkage.





SQUARE

SIZE	L X W X H	WEIGHT
Planter (S)	18" x 18" x 18"	36 lbs
Planter (M)	24" x 24" x 24"	64 lbs
Planter (L)	36" x 36" x 36"	144 lbs

Picture shows custom branding available

RECTANGLE

SIZE	L X W X H	WEIGHT
Planter (S)	36" x 18" x 24"	66 lbs
Planter (M)	36" x 18" x 36"	88 lbs
Planter (L)	48" x 18" x 36"	110 lbs
Double Planter (XL)	36" x 24" x 24"	64 lbs
Triple Planter (XXL)	48" x 24" x 24"	78 lbs



TAPERED

SIZE	L X W X H	WEIGHT
Planter (S)	18" x 18" x 18"	44 lbs
Planter (M)	20" x 20" x 24"	57 lbs
Planter (L)	36" x 36" x 36"	158 lbs

Planter base is 4" smaller than top

**INQUIRE ABOUT CUSTOM SIZING
OR BRANDING**

HERITAGE COLLECTION

For over forty years, skilled designers and craftsman have produced decorative fiberglass planters that even the keenest eye cannot distinguish from traditional materials like terracotta.

Why fiberglass and resin? A wonderful, tough and versatile material, fiberglass is maintenance-free and lightweight. Completely frost-proof and non-corrosive, it is superior to terracotta, stone, and wood.

All planters are handmade in workshops around the world and include a 5-year warranty.

MAINTENANCE & CARE

Always make sure your planters are well drained. The planters may be cleaned with water and a soft cloth. Avoid using aggressive chemicals or mechanical cleaning agents, such as bleach, high-pressure cleaners or hard brushes, which might affect or damage the finish.

Standard felt pads will protect delicate surfaces against scratching for indoor use. Use Potrisers under the planters for outdoor applications. They will slightly elevate the planter off the surface, enable proper drainage, protect surfaces, and the planters. It is very important to only use potting soil formulated for planters and container gardening. Improper installations and other forms of misuse may void the product warranty. Do not push or pull full-planted pots by the top lip.





DOWNING

SIZE	L X W X H
Planter (S)	16"x 16"x 16"
Planter (M)	20"x 20"x 20"
Planter (L)	24"x 24"x 24"
Planter (XL)	30"x 30"x 28"
Trough (L)	38"x 20"x 20"
Trough (XL)	56"x 20"x 20"

Available Colors: Faux
Lead (as shown)



SLOANE

SIZE	L X W X H
Small	12"x 12"x 15"
Medium	15"x 15"x 18"
Large	18"x 18"x 21"
X-Large	24"x 24"x 28"
XX- Large	31"x 31"x 39"

Available Colors:
White



HAMPTON

SIZE	L X W X H
Planter (S)	15"x 15"x 15"
Planter (L)	24"x 24"x 24"
Trough (L)	36"x 13"x 15"
Double Planter (XL)	46.5"x 24"x 23"
Triple Planter (XXL)	68"x 24"x 24"

Available Colors: Faux
Lead (as Shown)



INQUIRE ABOUT CUSTOM COLORS & FINISHES



ELIZABETHAN

SIZE	L X W X H
Planter (S)	12"x 12"x 9"
Planter (M)	15"x 15"x 13"
Planter (L)	20"x 20"x 16"
Trough (M)	29"x 15"x 13"
Trough (L)	43"x 15"x 13"
Trough (XL)	59"x 20"x 16"

Available Colors:
Faux Lead (as shown)



STUART

SIZE	L X W X H
Planter (S)	12"x 12"x 14"
Planter (M)	15"x 15"x 18"
Planter (L)	18"x 18"x 20"
Planter (XL)	24"x 24"x 29"
Trough (L)	36"x 12"x 14"
Trough (XL)	51"x 16"x 20"
Round (M)	19"d 24"h

Available Colors:
Faux Lead (as shown)



SIZE	L X W X H
Small	15"x 15"x 14"
Medium	19"x 19"x 15"
Large	25"x 25"x 23"
X-Large	39"x 39"x 35"
Trough	36"x 15"x 15"

Available Colors:
White



INQUIRE ABOUT CUSTOM COLORS & FINISHES



CHIPPENDALE

SIZE	L X W X H
Small	12"x 12"x 14"
Medium	15"x 15"x 18"
Large	18"x 18"x 20"

Available Colors:
White (as shown)



GROSVENOR

SIZE	L X W X H
Planter (S)	16"x 16"x 16"
Planter (M)	20"x 20"x 20"
Planter (L)	24"x 24"x 24"
Planter (XL)	35"x 35"x 35"
Trough (L)	47"x 12"x 20"
Trough (XL)	55"x 16"x 28"
Round	19"d x 21"h

Available Colors:
Faux Lead



TRAFALGAR

SIZE	L X W X H
Planter (S)	16"x 16"x 16"
Planter (M)	20"x 20"x 20"
Round (S)	19"d x 17"h
Round (L)	28"d x 28"h
Round (XL)	31"d x 24"h

Available Colors:
Faux Lead (as shown)



INQUIRE ABOUT CUSTOM COLORS & FINISHES

CONTEMPORARY FIBERGLASS COLLECTION

Available in a dedicated catalog

For the complete line, including full specifications, finishes, and sizing, please reference our 2026 Contemporary Fiberglass Catalog.



FIBERGLASS FINISHES

NEW IN 2026!

ROUGH CAST:

ROUGH CAST captures the raw beauty of natural materials. With its weathered stone like texture and subtle imperfections, each piece feels handcrafted. Versatile in both modern and rustic settings, these planters bring timeless texture and grounded elegance indoors or out.

White
Asparagus



Dusty Trail



Lunar Surface



Coral
Canyon



Wild
Mushroom



Storm



STONE:

STONE reflects the quiet elegance of carved stone, with soft striations and subtle depth. Balancing architectural refinement with organic warmth, it delivers understated luxury and timeless sophistication for both contemporary and traditional spaces.

White
Asparagus



Dusty Trail



Lunar Surface



Coral
Canyon



Wild
Mushroom



Storm





HOW TO GET A QUOTE

Call us: (703) 350-7738

We'd love to hear from you! Share your vision with us so we can bring your ideas to life.

Email us: hello@mountvernonvesselsvines.com

Send the drawings, a sketch, or a vision board and we'll provide an estimate tailored to your needs. If you have a specific request in mind, just let us know, and we'll send you a quote right away.

Website: www.mountvernonvesselsvines.com

Our website features convenient forms to help you outline your project requirements. Simply provide details on material, sizing, finish, shape, and timeframe, and we'll get back to you with a quote.

DON'T SEE THE SIZE OR COLOR YOU ARE LOOKING FOR?

At MVVV, we believe in the perfect fit for every space. That's why we offer customizable sizing and finishes, allowing you to create a product that truly reflects your style and meets your unique needs.





MOUNT VERNON

VESSELS & VINES

CONTACT US

www.mountvernonvesselsvines.com
hello@mountvernonvesselsvines.com
(703) 350-7738

